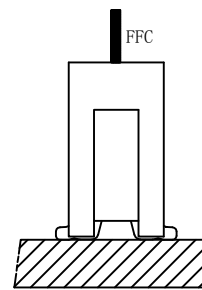
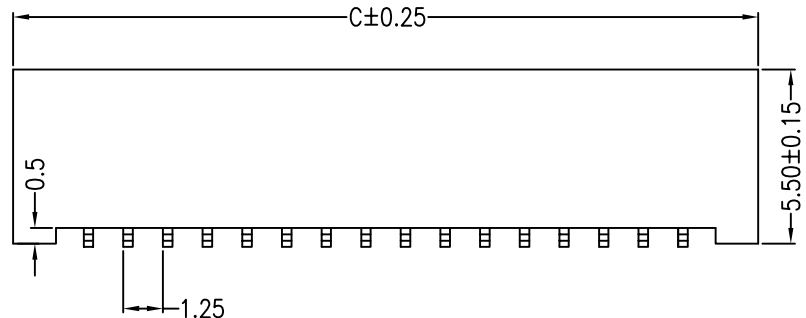
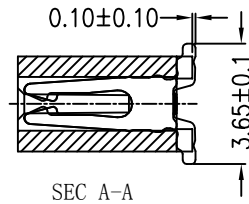
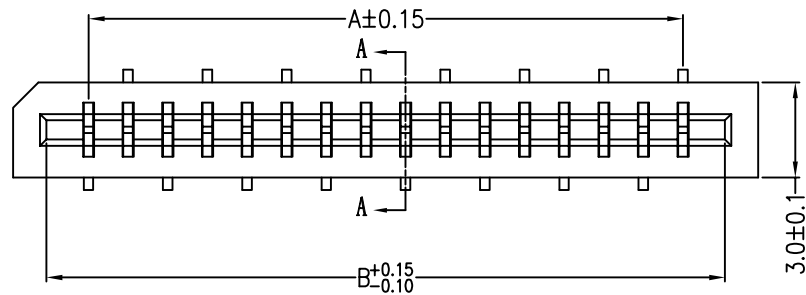
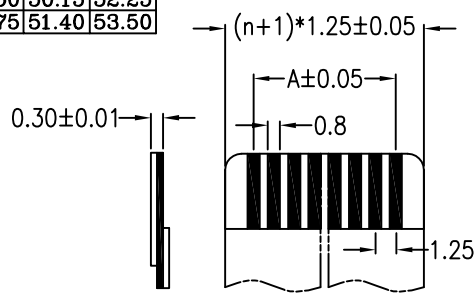


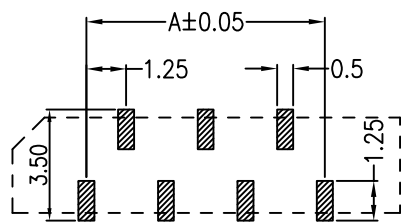
尺寸 P数	DIM.A	DIM.B	DIM.C
4	3.75	6.40	8.50
5	5.00	7.65	9.75
6	6.25	8.90	11.00
7	7.50	10.15	12.25
8	8.75	11.40	13.50
9	10.00	12.65	14.75
10	11.25	13.90	16.00
11	12.50	15.15	17.25
12	13.75	16.40	18.50
13	15.00	17.65	19.75
14	16.25	18.90	21.00
15	17.50	20.15	22.25
16	18.75	21.40	23.50
17	20.00	22.65	24.75
18	21.25	23.90	26.00
19	22.50	25.15	27.25
20	23.75	26.40	28.50
21	25.00	27.65	29.75
22	26.25	28.90	31.00
23	27.50	30.15	32.25
24	28.75	31.40	33.50
25	30.00	32.65	34.75
26	31.25	33.90	36.00
27	32.50	35.15	37.25
28	33.75	36.40	38.50
29	35.00	37.65	39.75
30	36.25	38.90	41.00
31	37.50	40.15	42.25
32	38.75	41.40	43.50
33	40.00	42.65	44.75
34	41.25	43.90	46.00
35	42.50	45.15	47.25
36	43.75	46.40	48.50
37	45.00	47.65	49.75
38	46.25	48.90	51.00
39	47.50	50.15	52.25
40	48.75	51.40	53.50



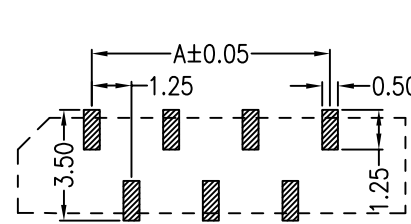
安装示意图
Assembly Layout



适用扁平电缆 (Proper cable)



正针 PCB 寸法
Positive needle PCB layout



反针 PCB 寸法
Versa needle PCB layout

■ 技术参数 (SPECIFICATIONS)

- ◆ 极数: 4~40 Poles: 4~40
- ◆ 额定电压: AC, DC, 200V (50HZ有效值)
Voltage rating: AC, DC, 50V (200HZ)
- ◆ 额定电流: 0.5A, AC, DC
Current rating: 0.5A, AC, DC
- ◆ 耐压值: 500V AC/minute
Withstand voltage: 500V AC/minute
- ◆ 工作温度: -25℃~+85℃
Working Temperature: -25℃~+85℃
- ◆ 绝缘电阻: ≥ 800 MΩ
Insulation resistance: ≥ 800 MΩ
- ◆ 接触电阻: ≤ 0.02 Ω
Contact resistance: ≤ 0.02 Ω
- ◆ 双面接触:
Dual Contact

■ 接触件 (TERMINAL)

- ◆ 材质: 磷铜
Material: Phosphor Bronze

■ 塑胶本体 (HOUSING)

- ◆ 材质: PA9T, UL 94V-0
Material: PA9T, UL 94V-0

■ 包装方式 (PACKAGE)

- ◆ 管装 Pipe Package
- ◆ 卷装 Winding Package

Part No : FPC 1.25 - 2 - nPBF

间距: (Pitch) _____
立贴: 2 _____
线数: (Hole location) _____
反针:F (正针无) _____
Reversed pointer:F(None for positive pointer)

GENERAL TOLERANCE		SCALE: 4:1	DRAWN:	DATE:	东莞市创亿科技有限公司 DONGGUAN CYCONN TECHNOLOGY CO.,LTD	DOCUMENT NO:	REV. B
XX. ±0.40		UNIT: mm	CHECK:	DATE:		PARTS NO. : FPC1.25-2-nPB	TITLE: 成品图
X. ±0.30		SIZE: A4	APPROVE:	DATE:			
.X ±0.25	X° ± 2°						
.XX ±0.15	.X° ± 1°						