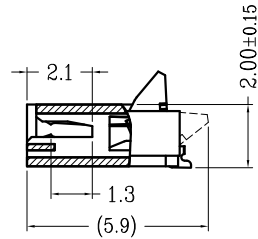
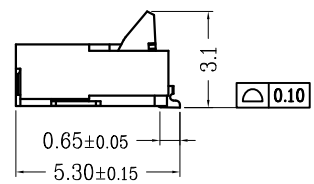
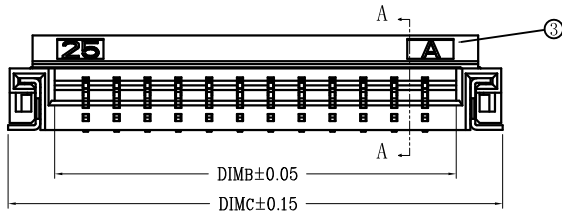
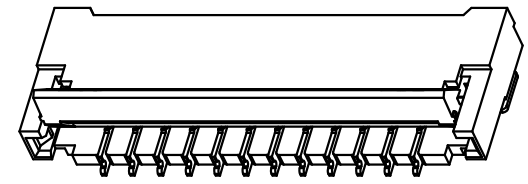
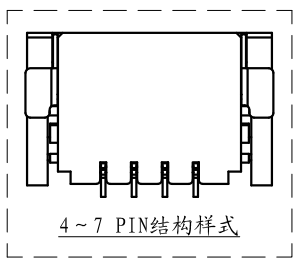
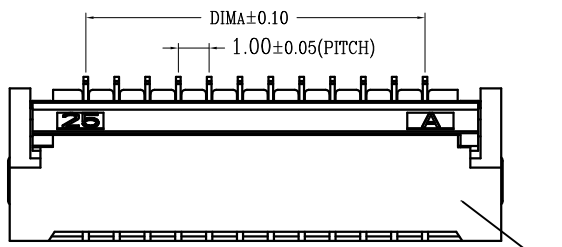
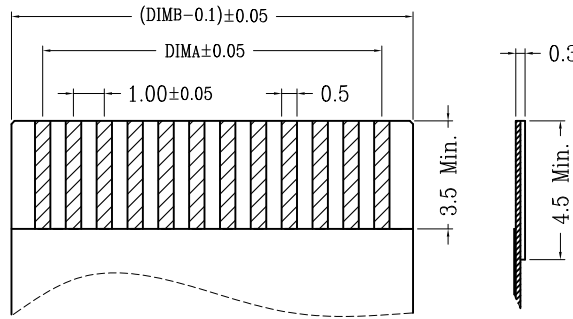
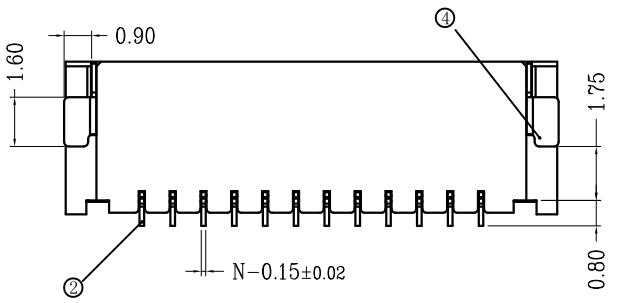


版次	变更摘要	日期
0	初版发行	2015/7/28

序号	品名	材质
①	1.0后压胶芯 (H2.0)	LCP UL94V-0 本色
②	0.5后压端子 (H2.0)	铜合金/表面镀锡
③	0.5后压后盖 (H2.0)	LCP UL94V-0 黑色
④	0.5后压焊片 (H2.0)	铜合金/表面镀锡



SECTION A-A



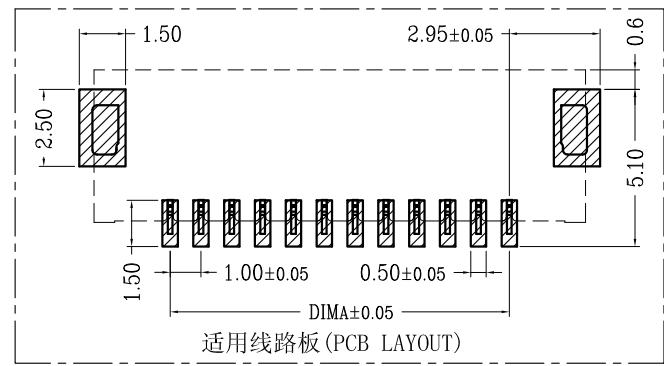
适用扁平线(Applicable Flat Cable)

* 号是表示已开模批量生产的Pin位

CKT	DIMA	DIMB	DIMC
* 4	3.00	5.02	8.04
* 5	4.00	6.02	9.04
6	5.00	7.02	10.04
7	6.00	8.02	11.04
* 8	7.00	9.02	12.04
9	8.00	10.02	13.04
* 10	9.00	11.02	14.04
11	10.00	12.02	15.04
* 12	11.00	13.02	16.04
13	12.00	14.02	17.04
* 14	13.00	15.02	18.04
15	14.00	16.02	19.04
* 16	15.00	17.02	20.04
17	16.00	18.02	21.04
* 18	17.00	19.02	22.04
19	18.00	20.02	23.04
* 20	19.00	21.02	24.04
21	20.00	22.02	25.04
* 22	21.00	23.02	26.04
23	22.00	24.02	27.04
* 24	23.00	25.02	28.04
25	24.00	26.02	29.04
* 26	25.00	27.02	30.04
27	26.00	28.02	31.04
* 28	27.00	29.02	32.04
29	28.00	30.02	33.04
* 30	29.00	31.02	34.04

技术指标:

1. 塑件表面应光洁、无毛边、无明显收缩、缺陷、裂纹等现象。
2. 温度范围: -25° C~85° C.
3. 额定电压: 50V, AC/DC(等效).
4. 接触电阻: ≤0.03Ω.
5. 绝缘电阻: ≥500MΩ



适用线路板(PCB LAYOUT)



一般公差(TOLERANCE)
X ±0.50 XX ±1.0
X ±0.20 XXX ±0.5
ANGLES ±1°

品名 (TITLE) 1.0 Pitch后压卧式(H=2.0)		制图 (DR)	
料号 (DWG.NO) 1.0S-7X-nPWB		校对 (CHKD)	
比例 (SCALE) 1:1		审核 (APPD)	
单位 (UNITS) mm	张数 (SHEET) 1 OF 1	尺寸 (SIZE) A4	REV A