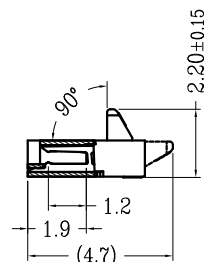
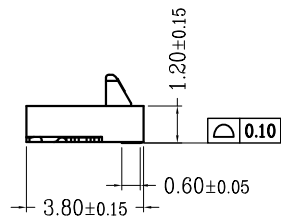
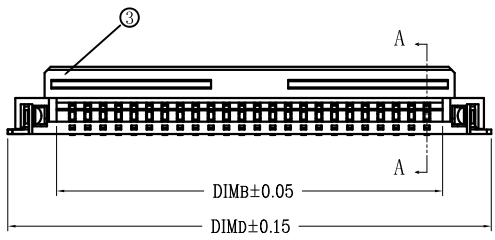
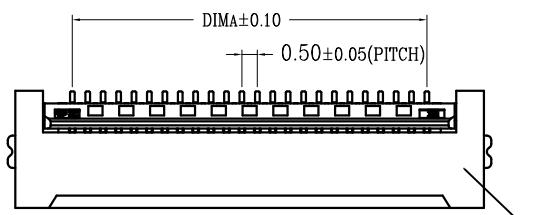
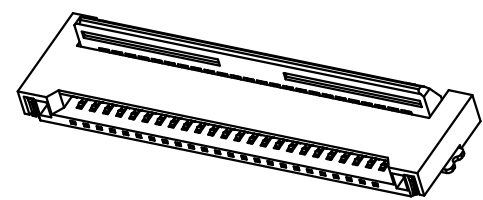
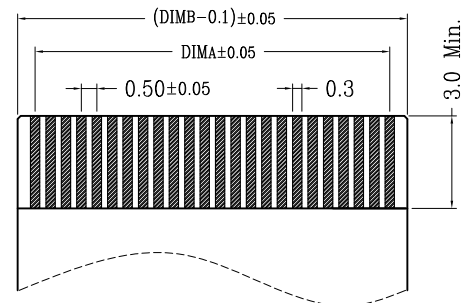
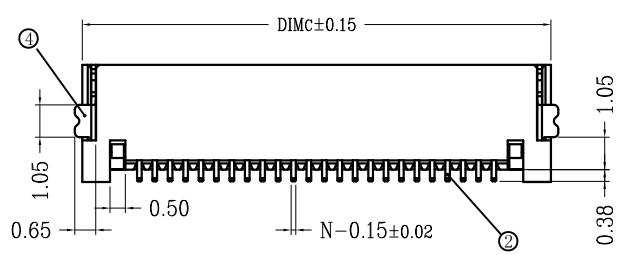


版次	变更摘要	日期	序号	品名	材质
1	增加料号说明	2015/1/28			

①	0.5后压卧式2代胶芯 (H1.2)	LCP UL94V-0 本色
②	0.5后压卧式端子 (H1.2)	铜合金/表面镀金
③	0.5后压卧式2代后盖 (H1.2)	LCP UL94V-0 黑色
④	0.5后压卧式焊片 (H1.2)	铜合金/表面镀锡



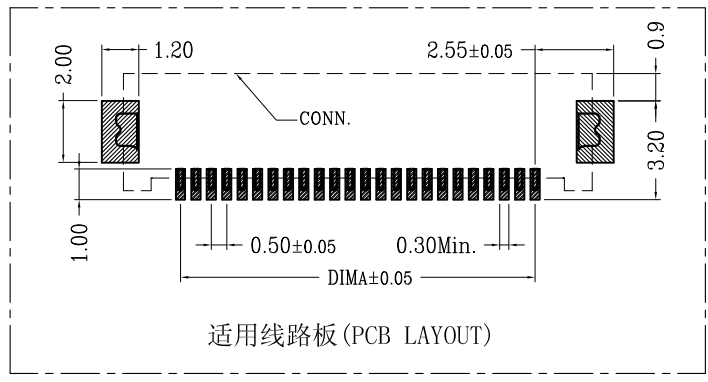
SECTION A-A



适用扁平线 (Applicable Flat Cable)

CKT	D1MA	D1MB	D1MC	D1MD	CKT	D1MA	D1MB	D1MC	D1MD
4	1.50	2.52	5.20	5.68	33	16.00	17.02	19.70	20.18
5	2.00	3.02	5.70	6.18	34	16.50	17.52	20.20	20.68
6	2.50	3.52	6.20	6.68	35	17.00	18.02	20.70	21.18
7	3.00	4.02	6.70	7.18	36	17.50	18.52	21.20	21.68
8	3.50	4.52	7.20	7.68	37	18.00	19.02	21.70	22.18
9	4.00	5.02	7.70	8.18	38	18.50	19.52	22.20	22.68
10	4.50	5.52	8.20	8.68	39	19.00	20.02	22.70	23.18
11	5.00	6.02	8.70	9.18	40	19.50	20.52	23.20	23.68
12	5.50	6.52	9.20	9.68	41	20.00	21.02	23.70	24.18
13	6.00	7.02	9.70	10.18	42	20.50	21.52	24.20	24.68
14	6.50	7.52	10.20	10.68	43	21.00	22.02	24.70	25.18
15	7.00	8.02	10.70	11.18	44	21.50	22.52	25.20	25.68
16	7.50	8.52	11.20	11.68	45	22.00	23.02	25.70	26.18
17	8.00	9.02	11.70	12.18	46	22.50	23.52	26.20	26.68
18	8.50	9.52	12.20	12.68	47	23.00	24.02	26.70	27.18
19	9.00	10.02	12.70	13.18	48	23.50	24.52	27.20	27.68
20	9.50	10.52	13.20	13.68	49	24.00	25.02	27.70	28.18
21	10.00	11.02	13.70	14.18	50	24.50	25.52	28.20	28.68
22	10.50	11.52	14.20	14.68	51	25.00	26.02	28.70	29.18
23	11.00	12.02	14.70	15.18	52	25.50	26.52	29.20	29.68
24	11.50	12.52	15.20	15.68	53	26.00	27.02	29.70	30.18
25	12.00	13.02	15.70	16.18	54	26.50	27.52	30.20	30.68
26	12.50	13.52	16.20	16.68	55	27.00	28.02	30.70	31.18
27	13.00	14.02	16.70	17.18	56	27.50	28.52	31.20	31.68
28	13.50	14.52	17.20	17.68	57	28.00	29.02	31.70	32.18
29	14.00	15.02	17.70	18.18	58	28.50	29.52	32.20	32.68
30	14.50	15.52	18.20	18.68	59	29.00	30.02	32.70	33.18
31	15.00	16.02	18.70	19.18	60	29.50	30.52	33.20	33.68
32	15.50	16.52	19.20	19.68					

- 技术指标:
1. 塑件表面应光洁、无毛边、无明显收缩、缺陷、裂纹等现象。(The surface of the plastic parts should be smooth, no rough edges, no obvious shrinkage, defects, cracks and other phenomena.)
 2. 温度范围(Temperature range): -25° C~+85° C.
 3. 额定电压(Rated voltage): 50V, AC/DC(=等效).
 4. 接触电阻(Contact resistance): ≤0.03Ω.
 5. 绝缘电阻(Insulation resistance): ≥500MΩ
 6. 端子点镀金(Contact and weld area gold-plated)
- Packing (包装方式) TAPE & REEL 卷装



适用线路板 (PCB LAYOUT)



一般公差 (TOLERANCE)
 X ±0.50 XX ±1.0
 X ±0.20 XXX ±0.05
 ANGLES ±1°

东莞市创亿科技有限公司
 DONGGUAN CYCONN TECHNOLOGY CO.,LTD

品名 (TITLE)	制图 (DR)
0.5 Pitch后压卧式2代 (H=1.2)	
料号 (DWG.NO)	校对 (CHKD)
0.5S-3B-nPWB	
比例 (SCALE)	审核 (APPD)
1:1	
单位 (UNITS)	张数 (SHEET)
mm	1 OF 1
SIZE	REV
A4	A