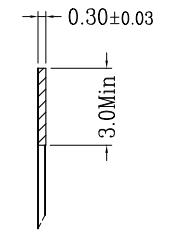
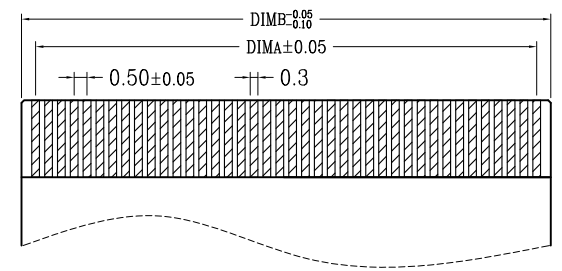
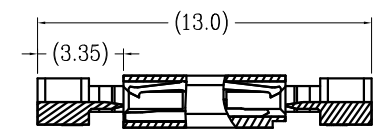
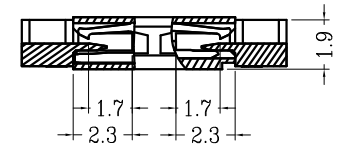
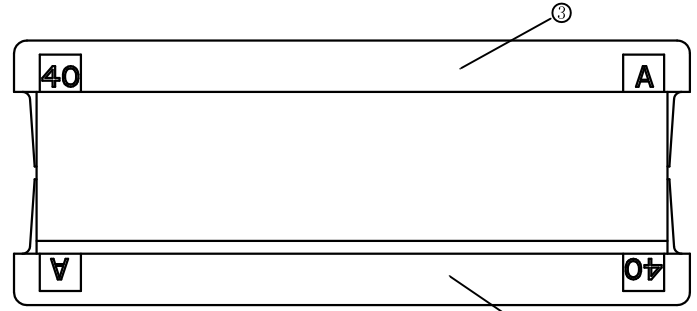
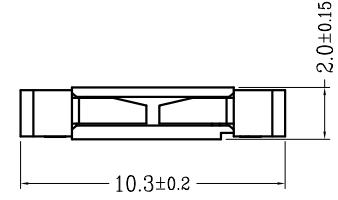
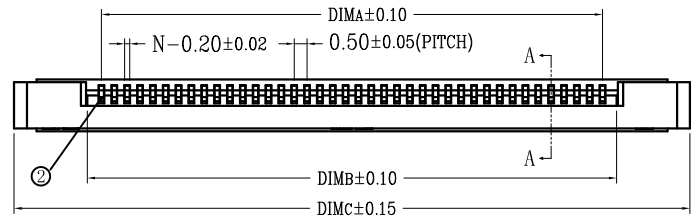
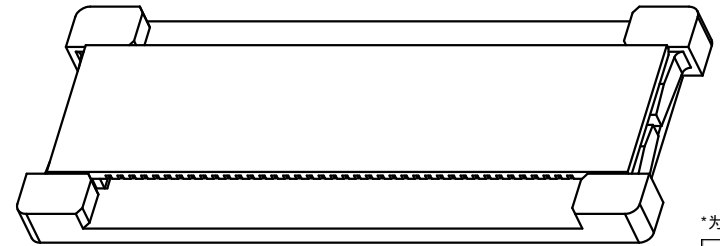
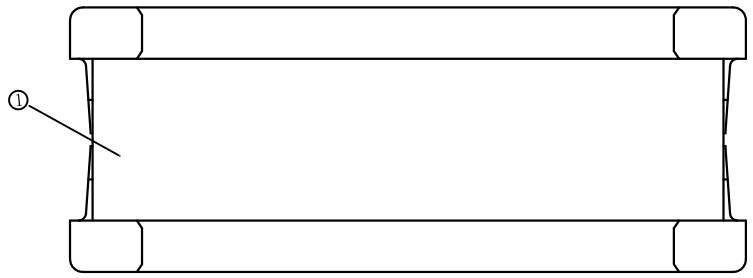


版次	变更摘要	日期
0	新产品发行	2016/02/20

序号	品名	材质
①	0.5双面拉拔胶芯(H=2.0)	LCP UL94V-0 本色
②	0.5双面拉拔端子(H=2.0)	磷青铜/表面镀锡 镀金
③	0.5双面拉拔后盖(H=2.0)	LCP UL94V-0 黑色



\*为已批量Pin位: 20Pin, 30Pin, 40Pin, 50Pin, 60Pin

CKT	DIM A	DIM B	DIM C	CKT	DIM A	DIM B	DIM C
4	1.50	2.60	8.30	33	16.00	17.10	22.80
5	2.00	3.10	8.80	34	16.50	17.60	23.30
6	2.50	3.60	9.30	35	17.00	18.10	23.80
7	3.00	4.10	9.80	36	17.50	18.60	24.30
8	3.50	4.60	10.30	37	18.00	19.10	24.80
9	4.00	5.10	10.80	38	18.50	19.60	25.30
10	4.50	5.60	11.30	39	19.00	20.10	25.80
11	5.00	6.10	11.80	*40	19.50	20.60	26.30
12	5.50	6.60	12.30	41	20.00	21.10	26.80
13	6.00	7.10	12.80	42	20.50	21.60	27.30
14	6.50	7.60	13.30	43	21.00	22.10	27.80
15	7.00	8.10	13.80	44	21.50	22.60	28.30
16	7.50	8.60	14.30	45	22.00	23.10	28.80
17	8.00	9.10	14.80	46	22.50	23.60	29.30
18	8.50	9.60	15.30	47	23.00	24.10	29.80
19	9.00	10.10	15.80	48	23.50	24.60	30.30
20	9.50	10.60	16.30	*49	24.00	25.10	30.80
21	10.00	11.10	16.80	*50	24.50	25.60	31.30
22	10.50	11.60	17.30	51	25.00	26.10	31.80
23	11.00	12.10	17.80	52	25.50	26.60	32.30
24	11.50	12.60	18.30	53	26.00	27.10	32.80
25	12.00	13.10	18.80	54	26.50	27.60	33.30
26	12.50	13.60	19.30	55	27.00	28.10	33.80
27	13.00	14.10	19.80	56	27.50	28.60	34.30
28	13.50	14.60	20.30	57	28.00	29.10	34.80
29	14.00	15.10	20.80	58	28.50	29.60	35.30
30	14.50	15.60	21.30	*59	29.00	30.10	35.80
31	15.00	16.10	21.80	*60	29.50	30.60	36.30
32	15.50	16.60	22.30				

- 技术指标:
1. 塑件表面应光洁、无毛边、无明显收缩、缺陷、裂纹等现象.
  2. 温度范围: -25° C~85° C.
  3. 额定电压: 50V, AC/DC(等效).
  4. 接触电阻: ≤0.03Ω.
  5. 绝缘电阻: ≥500MΩ

适用扁平线

一般公差 (TOLERANCE)	
X ±0.50	.XX ±1.0
X ±0.20	.XXX ±0.5
ANGLES ±1°	

**东莞市创亿科技有限公司**  
DONGGUAN CYCONN TECHNOLOGY CO.,LTD

品名 (TITLE)	制图 (DR)
0.5 Pitch双面拉拔 (H=2.0)	校对 (CHKD)
料号 (DWG.NO)	审核 (APPD)
0.5-D1-nP	张数 (SHEET)
比例 (SCALE)	单位 (UNITS)
1:1	mm
比例 (SCALE)	张数 (SHEET)
1:1	1 OF 1
比例 (SCALE)	尺寸 (SIZE)
1:1	A4
比例 (SCALE)	版本 (REV)
1:1	A